



**MEADOW VIEW, Epping Lane, Stapleford Tawney,**  
**Asking Price £1,360,000**

**MILLERS**  
NEW HOMES



Nestled in open countryside, this exclusive collection of just four executive homes sits within easy reach of both Epping and Theydon Bois, offering a rare blend of rural tranquility and convenient access.

Meadow View sits at the heart of the Epping Forest district, surrounded by gentle rolling fields that create a peaceful rural backdrop. Despite its tranquil setting, the development is perfectly placed for London commuters, with nearby villages offering all the essentials for daily life. Each of the four homes is individually designed and finished to a high standard, blending elegant, contemporary interiors with the comfort and privacy of a secure, gated entrance.

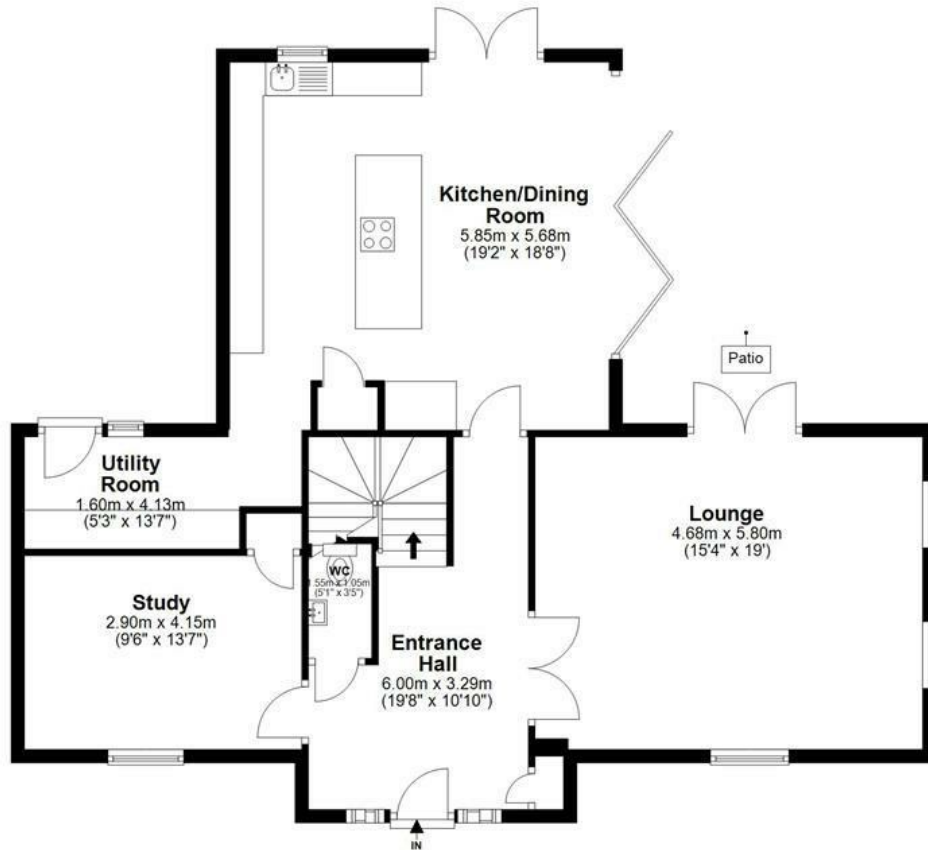
Plot Four is a detached four-bedroom home, thoughtfully arranged over approximately 2,099 square feet to provide generous living space for family life.

Stepping inside, you are greeted by a welcoming reception hall that leads into a bespoke Stoneham kitchen and dining room, where views stretch out across the gardens and open countryside beyond. The formal sitting room is filled with natural light from its dual aspect and opens directly onto the garden, creating a perfect space for relaxing or entertaining. A dedicated study and practical utility room complete the ground floor. Upstairs, four spacious bedrooms await, with the principal and second bedrooms each enjoying their own en-suite shower rooms, while a stylish family bathroom serves the remaining bedrooms. Outside, the home sits on a generous plot that backs onto open countryside, offering a private and peaceful retreat.

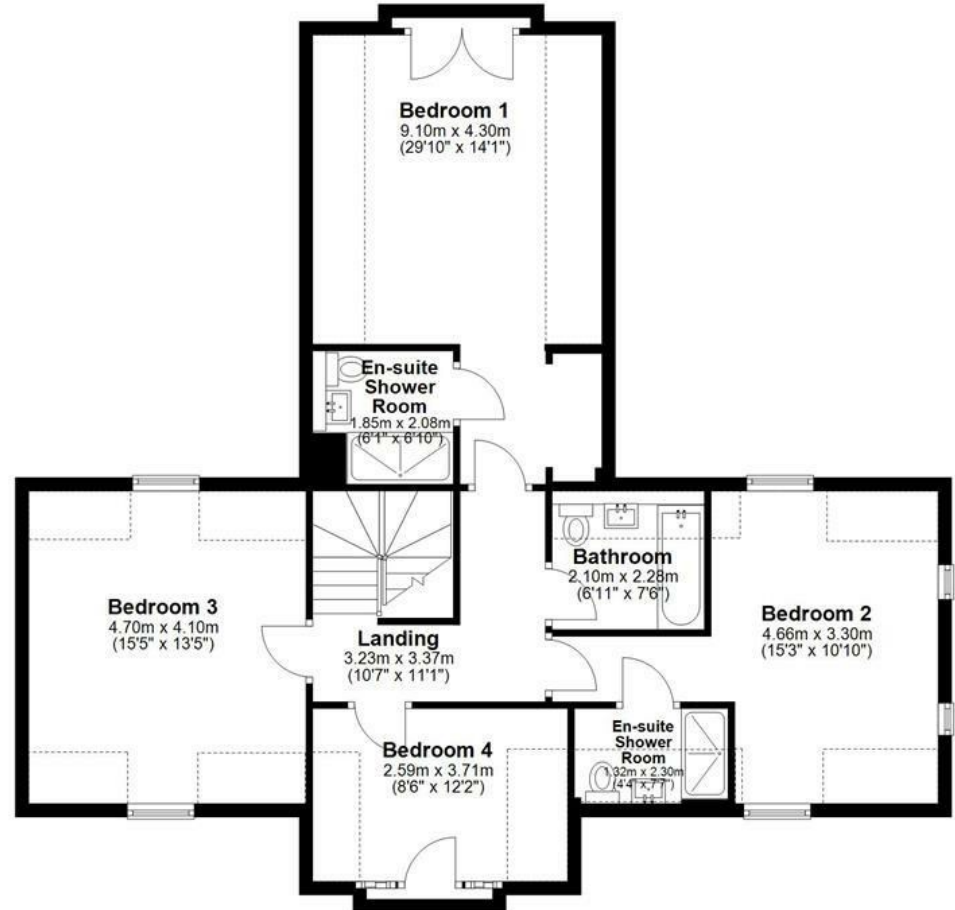
**MILLERS**  
NEW HOMES

**Meadow Views  
Stapleford Tawney**  
Plot 4

**Ground Floor**



**First Floor**

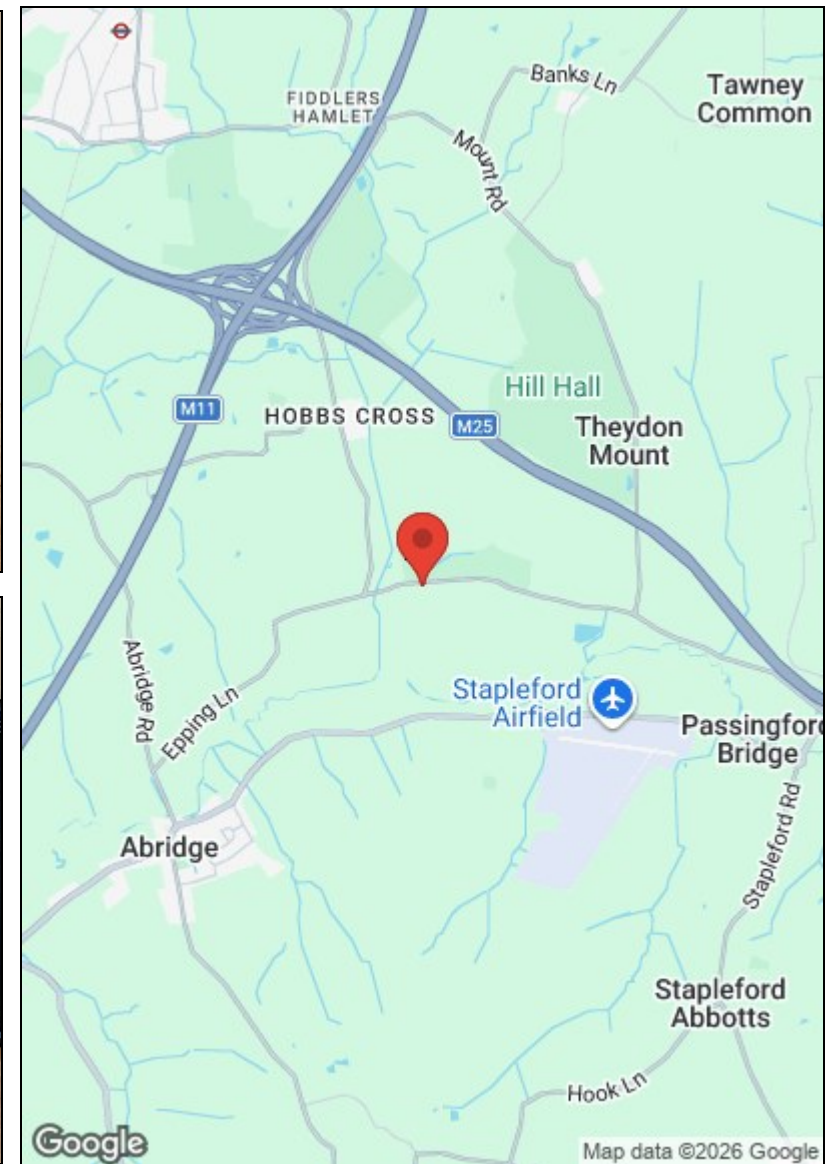


Total area : approx. 195 sq metres (2099 sq feet)

Our floor plans are intended to give a general indication of the proposed floor layout only and may vary in the finished building and overall footage

## Directions

From Miller's office at 229 High Street, Epping CM16 4BP continue north along the High Street turning right into Stonards Hill, just past Theydon Grove development and opposite the EFDC Council offices, proceed to the T junction and turn left heading towards Theydon Mount and passing Hill Hall on your right continue to the T junction turn right into Epping Lane and continue until you reach the Meadow Views development on your left-hand side.



**Viewing** Please contact our Millers Office on 01992 560555 if you wish to arrange a viewing appointment for this property or require further information.

These particulars, whilst believed to be accurate are set out as a general outline only for guidance and do not constitute any part of an offer or contract. Intending purchasers should not rely on them as statements of representation of fact, but must satisfy themselves by inspection or otherwise as to their accuracy. No person in this firm's employment has the authority to make or give any representation or warranty in respect of the property.

229 High Street, Epping, Essex, CM16 4BP

Tel: 01992 560555 | Email: [sales@millersepping.co.uk](mailto:sales@millersepping.co.uk)

[www.millers-portfoliohomes.co.uk](http://www.millers-portfoliohomes.co.uk)